



STUDY ABROAD &  
INCOMING EXCHANGE

# academic opportunities in psychology

Study at a world class university,  
with the largest School of  
Psychology in Australia



 THE UNIVERSITY  
OF QUEENSLAND  
AUSTRALIA

# study abroad & incoming exchange for psychology students

Want to study at one of Australia's most prestigious Schools of Psychology?

Would you like to discover: Why our memory is fallible? Why parenting can be so difficult? Why intelligence scores are imperfect? Why you may not always agree with your best friend? Why children think differently than adolescents? How we learn right from wrong? You will discover the answers to these and many more questions in courses at The University of Queensland's (UQ) School of Psychology.

We offer study abroad and incoming exchange students the opportunity to undertake courses in a wide range of psychological areas with award-winning teachers.

The courses included here are some of UQ's most popular psychology courses for study abroad and incoming exchange students. Additional courses may be available depending on previous study.

You will gain an international perspective on your field of study and broaden your skills and knowledge to better prepare you for your future studies back home.

Whilst you are here you will also experience UQ's world class sporting facilities, vibrant campus lifestyle, and wide range of social and cultural activities.

For an extensive list of available courses: [uq.edu.au/study](http://uq.edu.au/study)

For more information about UQ's Study Abroad and Incoming Exchange program: [uq.edu.au/studyabroad](http://uq.edu.au/studyabroad)

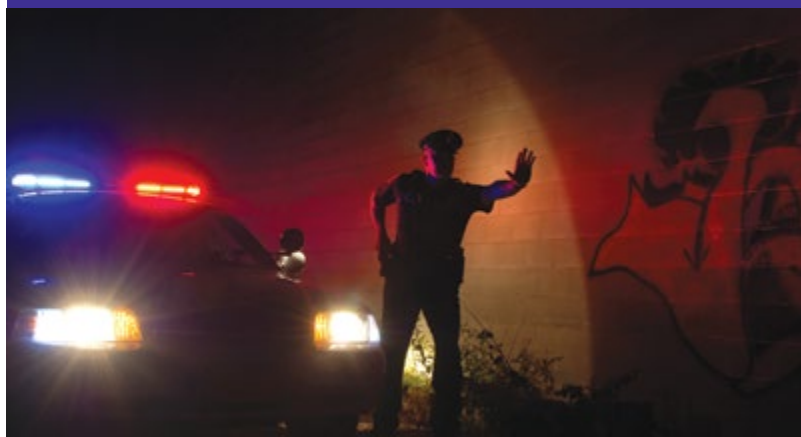


## Neuroscience for Psychologists

PSYC2020

### Semester 1 and 2 (February and July start)

All psychological phenomena are based in the brain and nervous system. This course overviews the rapidly expanding discipline of neuroscience as relevant to psychologists. Topics include the structure and function of sensory systems, neuropsychological aspects of attention, neural changes during learning, cortical control of executive functions and language, control of movement and skilled actions, and the biological bases of common perceptual, movement and mental disorders.



## Psychology of Criminal Justice

PSYC2361

### Semester 1 (February start) (Quota 110 enrolments)

How effective is our law and justice system? Why are mistakes made? In this course, you will follow the fictional crime from when it is committed, during the investigation phase, through to the trial. By experiencing a fictional case first hand, you will learn about the psychology of law and some of the misconceptions commonly held about criminal justice.



## The Science of Everyday Thinking

PSYC2371

### Semester 1 (February start)

Why do people believe weird things? How do we form and change our opinions? How can we make better decisions? In this course, we explore everyday thinking. We will discuss and debate medical diagnosis, paranormal phenomena, placebos, miracles, and more. You will learn how to evaluate claims, make sense of evidence, and understand why we so often make irrational choices. More information at [Think101.org](http://Think101.org)

## Developmental Psychology

PSYC2030

### Semester 1 and 2 (February and July start)

How do we transform from inexperienced infants to worldly adults? How do we learn to speak? To share toys and navigate social relationships? To act in ways appropriate to our culture? To make moral judgments? In this introduction to developmental psychology, we'll explore the variety of changes that begin in infancy and continue through adulthood.



## Social & Organisational Psychology

PSYC2040

### Semester 1 and 2 (February and July start)

How do humans relate to each other? Why do we love, hate, or act aggressively? This course will cover theory and research on topics such as aggression, emotion, stereotyping, prejudice, love, attraction, and the psychology of the workplace. You will be guided through the research process, from designing a study, to collecting and analysing data, to writing up a scientific report.

## Developmental Disorders of Childhood

PSYC2311

### Semester 2 (July start)

Are you interested in learning about developmental disorders like autism, ADHD, sensory disorders, anxiety and mood disorders from experienced clinical psychologists? Everyone associated with the course is able to talk from personal experience about issues related to diagnosis, assessment and treatment of specific disorders, as well as more general theoretical issues related to causes of disorders in development and the implications of various disorders for the understanding of normal development. You will learn how our explanation of a diagnosis is directly linked to treatment and how treatment choice is influenced by various theoretical perspectives.



## Psychotherapies & Counselling

PSYC3082

### Semester 2 (July start)

What is psychotherapy? In this course you will explore some of the most recognised and well-supported theories of psychotherapy. You will learn and view videos demonstrating micro counselling skills, psychodynamic therapy, person centred therapy, interpersonal therapy, behaviour therapy, cognitive behaviour therapy, and acceptance and commitment therapy. We will also look at some of the ethical and process issues therapists need to be mindful of when working with clients.

## Parenting & Family Psychology

PSYC3312

### Semester 2 (July start)

We all come from a family and have ideas, opinions and feelings about how families function. Research and intuition tell us that the family environment is central to children's development and for later adult functioning and adjustment. In this course, we will explore parenting and family interactions, as well as examine different family structures and functions, including parenting across cultures. We will explore functional and dysfunctional family relationships and behaviours, parenting practices, and effective ways to assess such interactions.

## Psychopathology

PSYC3102

### Semester 1 (February start)

What is it like to experience a mental illness? In this course, you will learn about how mental disorders are diagnosed and managed and the research that attempts to explain how and why these problems develop. People with mental disorders will speak with you about their lived experience of mental health problems. Case studies are also used to expand understanding of how mental disorders are experienced. You learn and practice basic clinical decision-making skills in small groups.

## Topics in Social Psychology

PSYC3032

### Semester 2 (July start)

Are you interested in how and why people influence each other's thoughts, feelings, and behaviours? These are the key questions addressed in this course. We start by examining the motivation for esteem, belonging, control, autonomy, and understanding, and then talk about perceiving others, affect, attitude formation and change, stereotypes and prejudice. You will learn about the latest findings and current topics of debate in the field of social psychology.

For an extensive list of available courses:  
[uq.edu.au/study](http://uq.edu.au/study)

*\*When selecting courses, students are advised to consult comprehensive information online at: [www.uq.edu.au/study](http://www.uq.edu.au/study)*

- Some courses assume pre-requisite knowledge or require a co-requisite enrolment
- Students are advised to bring their academic transcripts with them
- The semester in which a course is offered may change from year to year.

*Time of publication: Every effort has been made to ensure the accuracy of information in this document at the time of publication. The authoritative source of program and course information is the UQ Courses and Programs website at [uq.edu.au/study](http://uq.edu.au/study). Where any conflict of information exists, the rules and associated course lists approved by the UQ Senate shall apply.*

